



## **G3 Windows 10 Quick Manual**

iDTRONIC GmbH  
Ludwig-Reichling-Straße 4  
67059 Ludwigshafen  
Germany/Deutschland

Phone: +49 621 6690094-0  
Fax: +49 621 6690094-9  
E-Mail: [info@idtronic.de](mailto:info@idtronic.de)  
Web: [idtronic.de](http://idtronic.de)

Issue 4.4  
– 15. July 2020 –

Subject to alteration without prior notice.  
© Copyright iDTRONIC GmbH 2018  
Printed in Germany

## 1 Package



**G3**



**Battery**



**Adapter / AC Cord**



**Handstrap**



**Stylus Pen, String, Quick Manual**



**Rotating Handstrap (optional)**



**Desktop Cradle (optional)**



**Vehicle Cradle (optional)**

### Note

Items in the box may be changed according to the purchase order.

## 2 Device Features



### 3 Card installation



#### To insert the SIM Card & a Micro SD Card

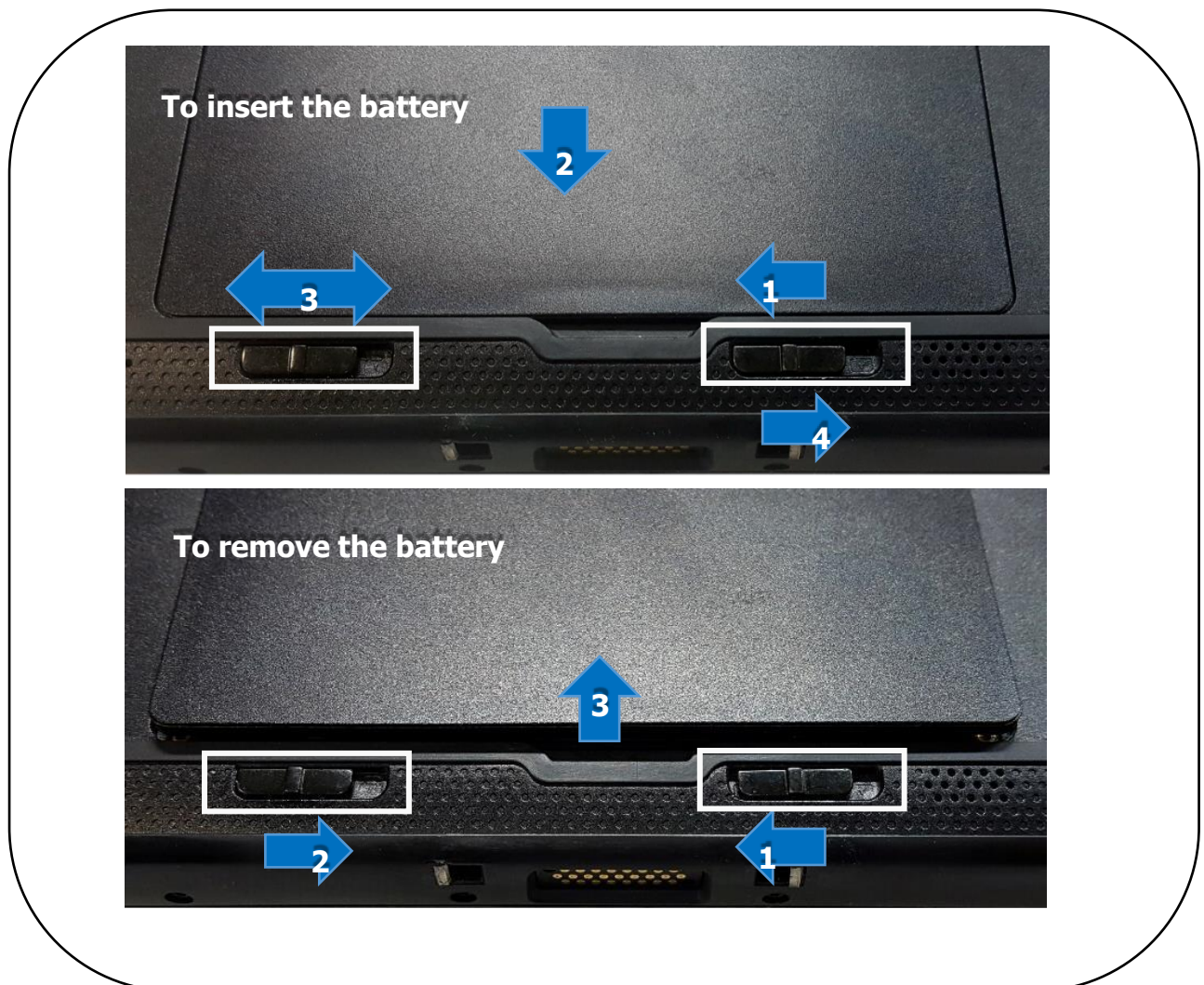
- SIM Card(A) : Insert a SIM Card in the SIM Card slot toward the direction of an arrow A.
- Micro SD Card(B) : Insert a Micro SD Card in the SD Card slot toward the direction of an arrow B.

#### To remove a SIM Card & a Micro SD Card

- SIM Card(A): Push a SIM Card to remove it.
- Micro SD Card(B) : Push a Micro SD Card to remove it.



## 4 Battery installation



### To insert the battery

1. Slide the 'right battery locker' in the direction (left) of the arrow 1.
2. Insert the battery in the device.
3. When the battery is inserted completely, the 'left battery locker' will be locked automatically.
4. Slide the 'right battery locker' in the opposite direction (right) of the arrow 1.

### To remove the battery

1. Slide the 'right battery locker' in the direction (left) of the arrow 1.
2. Sliding the 'left battery locker' to the direction of the arrow 2 remove the battery.

## 5 Charging



**1. Open the "USB & DC Jack" Cover**

**2. Insert the DC Jack in the DJ Jack hole.**

**3. Battery LED indicates as follows :**

- OFF : Not Charging
- Red LED : Charging
- Green LED : Fully Charged

### **\*\* Caution**

When you use the device for the first time or after not using for long period of time, please charge enough time before using.

Even though you connect the charger, the device may not turn on in the very low voltage state. Please charge the device for 30 minutes ~ 1 hour first. The charging LED change from green to red and then you can turn on the device.

If it's not working though the above action, Connecting the DC jack press and hold F1 button and camera button simultaneously for about

## 6 How to use

### Scanner

**Imager** : The LED aimer should be on the center of the barcode to get a successful read.



Good



Bad

### NFC



Put your NFC Card closely the "NFC icon" which is on back side of the device to read your NFC card.

**NFC reading distance depends on the Card type.**



## 7 How to use power

Press the Power button to turn on the device.

Note that please wait until the LED on after turning the device on.



\* When you insert/replace your battery, you should wait about 10 seconds to press the power button.

### 7.1 - Power Off

**Method-1.** Press and hold the power button until the instant message pop up appears. When the message, "Slide to shut down your PC" shows up and then please slide the screen toward to the bottom to shut down the device.

**Method-2.** Click or touch the "Shut down" of the power menu in the left-bottom of the screen to shut down the device.

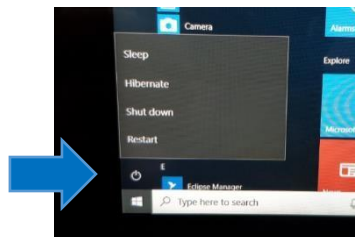
**Method-3.** Click or touch the "Hibernate" of the power menu in the left bottom of the screen to shut down the device.

\* **Hibernate** : The system appears to be off. Power consumption is reduced to the lowest level to preserve system state.

Note that you should wait until Power LED is off for replacing the battery.

### 7.2 - Reset

Click or touch the "Restart" of the power menu in the left bottom of the screen to restart your device.



### 7.3 - Hard Reset

Case 1 : If your device isn't running well even after you restart the device, press and hold the power button about 10 seconds to perform the Hard Reset.

**\*\* Caution** : We do not recommend "Hard Reset" and also do not guarantee it. It may cause the system problem after performing Hard Reset.

Case 2 : If it does not turn on like a brick under sufficient battery, please press and hold the camera button and F1 button at the same time about 7 seconds and then press the power button to turn it on.